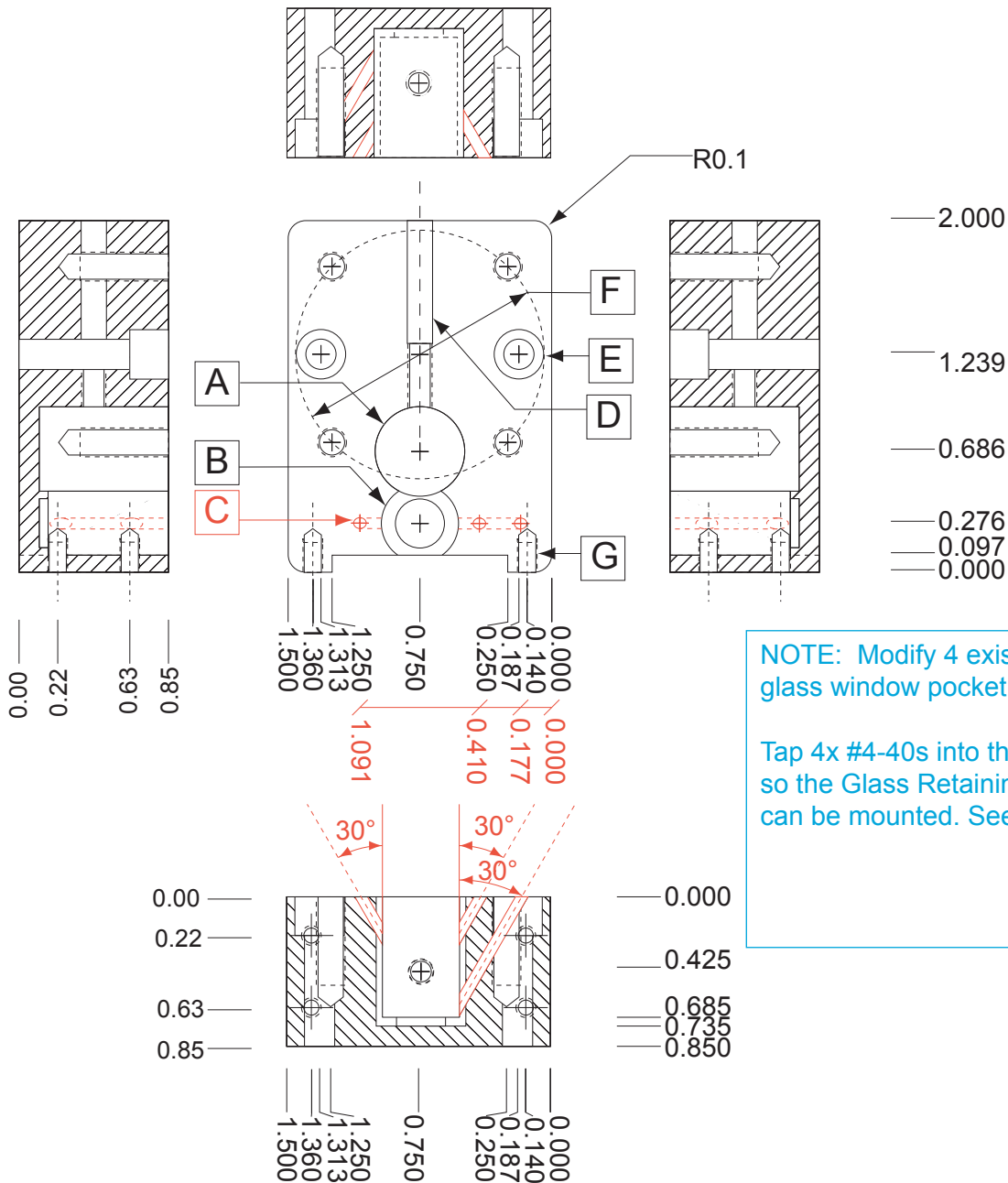


401 Bilayer Perfusion Chamber, Rev. 2



NOTE: Modify 4 existing cells to add glass window pocket.

Tap 4x #4-40s into the part so the Glass Retaining Plate (P/N 443) can be mounted. See G.

- A** Trans chamber
Ø.510 by 0.735 dp.
- B** Cis chamber
Ø.439 by 0.685 dp.
with stir bar step
Ø.279 by 0.050 dp.
- C** 3x Perfusion inlets/outlets
Ø.062 drill at 60° through
to cis chamber
- D** Trans cup #6-32 thumb screw
#6-32 thd. 1.059" to Trans chamber
with Ø.144 counterbore clearance 0.700 dp.
- E** 2x Alignment bolt clearances
Ø.172 clearance
Ø.281 counterbore 0.220 dp.
for #8-32 thd. socket head cap screw
- F** 4x #8-32 thd. 0.5" dp. on a Ø1.414 b.c.
- G** 4x #4-40 thd. 0.20" dp.

Part: Bilayer Perfusion Chamber
Material: PEEK
Scale: 1:1 Unit: inch